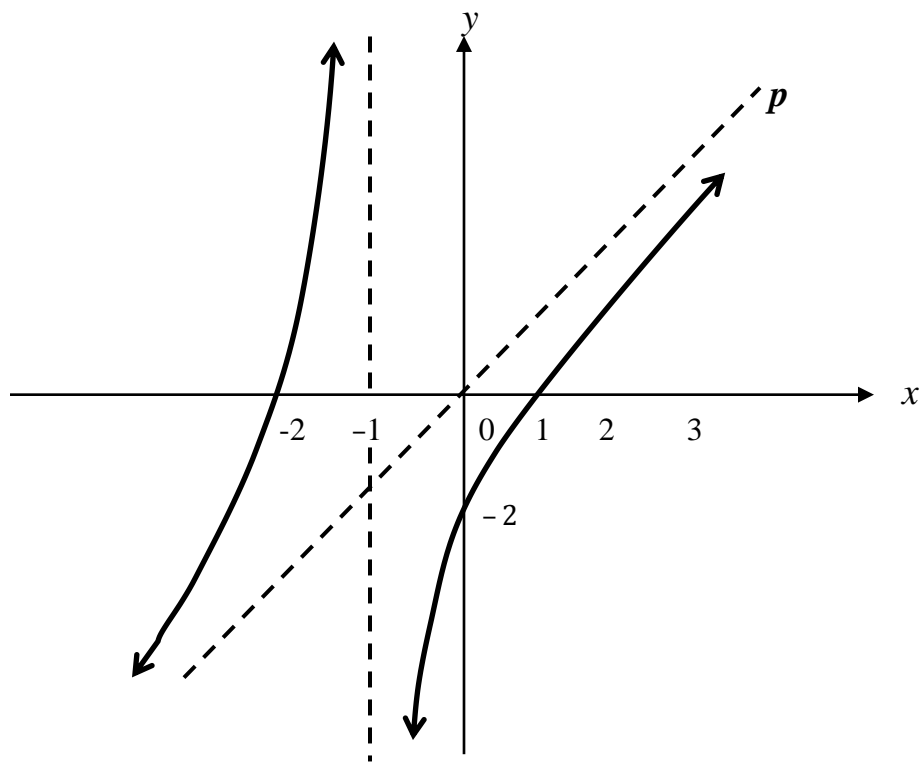


## Worksheet 6

### Year 13 Mathematics

Write the answers in your Exercise Book.

Study the **top-heavy** function shown below and then answer the questions that follow.



- (a) What are the coordinates of the **x-intercepts**? **(1 mark)**
- (b) What are the coordinates of the **y-intercept**? **(1/2 mark)**
- (c) State the equations of the **vertical** asymptote. **(1 mark)**
- (d) What is the name of the asymptote represented by line **p**? **(1/2 mark)**
- (e) The graph has the equation of the form

$$y = \frac{(x+a)(x-b)}{(x+c)}$$

Find the values of  $a$ ,  $b$ ,  $c$  and  $d$ .

**(2 marks)**